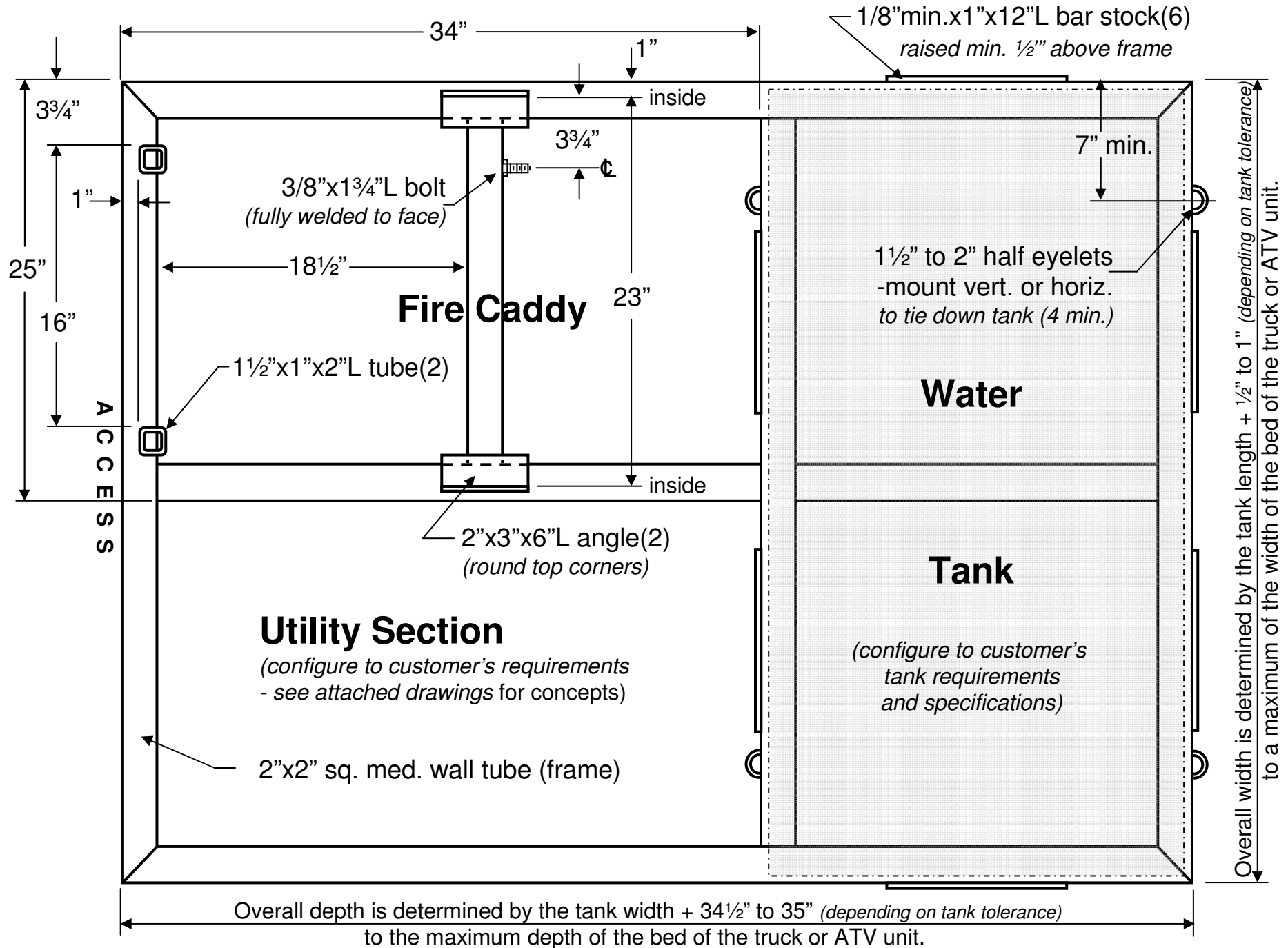


# FIRECADDY™ BedMount1150

for use with FireCaddy Models GH5501 & DY6001

Property of Just-In Case Fire Ltd.



# **FIRECADDY™ BedMount1150**

for use with FireCaddy Models GH5501 & DY6001

Property of **Just-In Case Fire Ltd.**



## Product Requirements

### Materials

All frame and structural material:

- Commercial grade mild steel
- HSS (hollow structural sections) .125" wall
- CSA# G40.2150W [replaces ASTM A36]
- Type G (general) or type W (weldable)

### Fabrication

Frame – full weld, grind for appearance and safety

Other – tack or bead weld, inside and outside

### Finish

SP10 near white sand blast

Zinc rich powder primer, ~2 mil

Red Baron powder coat (Dupont PFR400S9), 3-4 mil

- 420 °F, 25 minutes

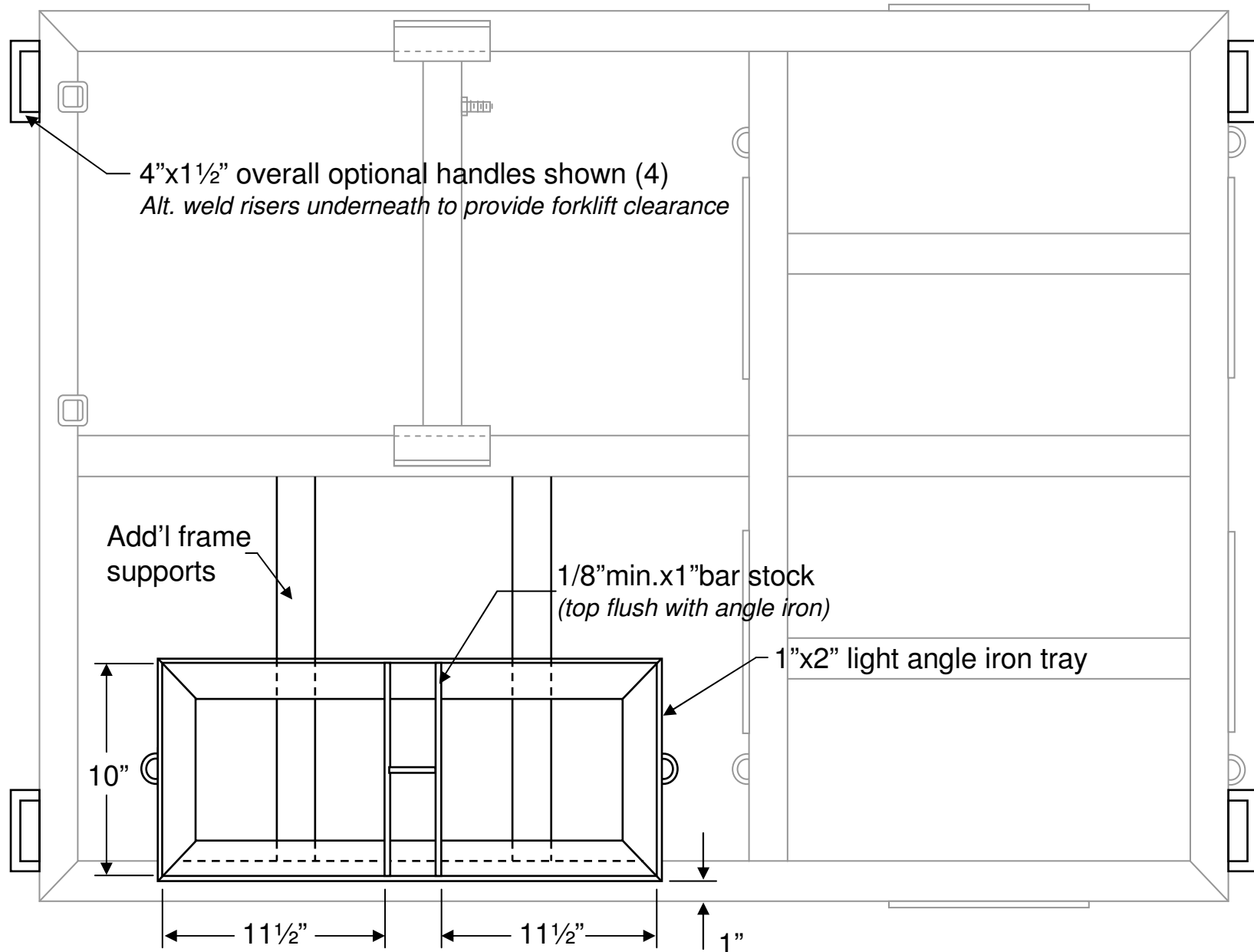
# FIRECADDY™ BedMount1150

for use with FireCaddy Models GH5501 & DY6001

Property of Just-In Case Fire Ltd.



Utility Tray: - 2 add'l 5 ga. containers of Fire Suppressant  
(Sample) - additional nozzles



Construct tray separately and then weld to frame and additional frame supports.  
Centre the tray and frame support within Utility Section

# FIRECADDY™ BedMount1150

for use with FireCaddy Models GH5501 & DY6001

Property of Just-In Case Fire Ltd.



Utility Tray: - FireCaddy DC1205  
(Sample) - 2 add'l 5 ga. containers of Fire Suppressant

